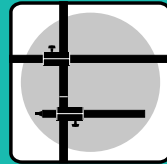


FOBA – your planning and installation partner.

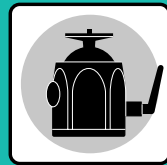
We shall be pleased to assist and advise you in planning and installing the optimal FOBA ceiling rail system for your studio. With the FOBA ROOF-TRACK system you will need very little assistance. You can easily install it yourself or with the help of a fitter. For the large FOBA MEGA-TRACK ceiling rail system, the assistance of your local FOBA agent is essential. This customized system is optimally adapted to suit your studio. And since it takes loads up to 250 kg, safety regulations demand exact design calculations by our statics specialists. This we guarantee.



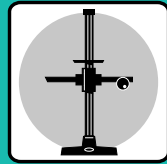
The comprehensive FOBA range:



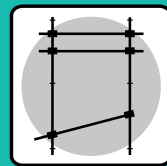
FOBA Combirühr System
Système de tubes FOBA
FOBA Combilube System



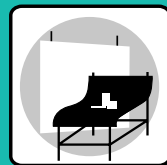
FOBA Stativköpfe
FOBA têtes de trépieds
FOBA tripod heads



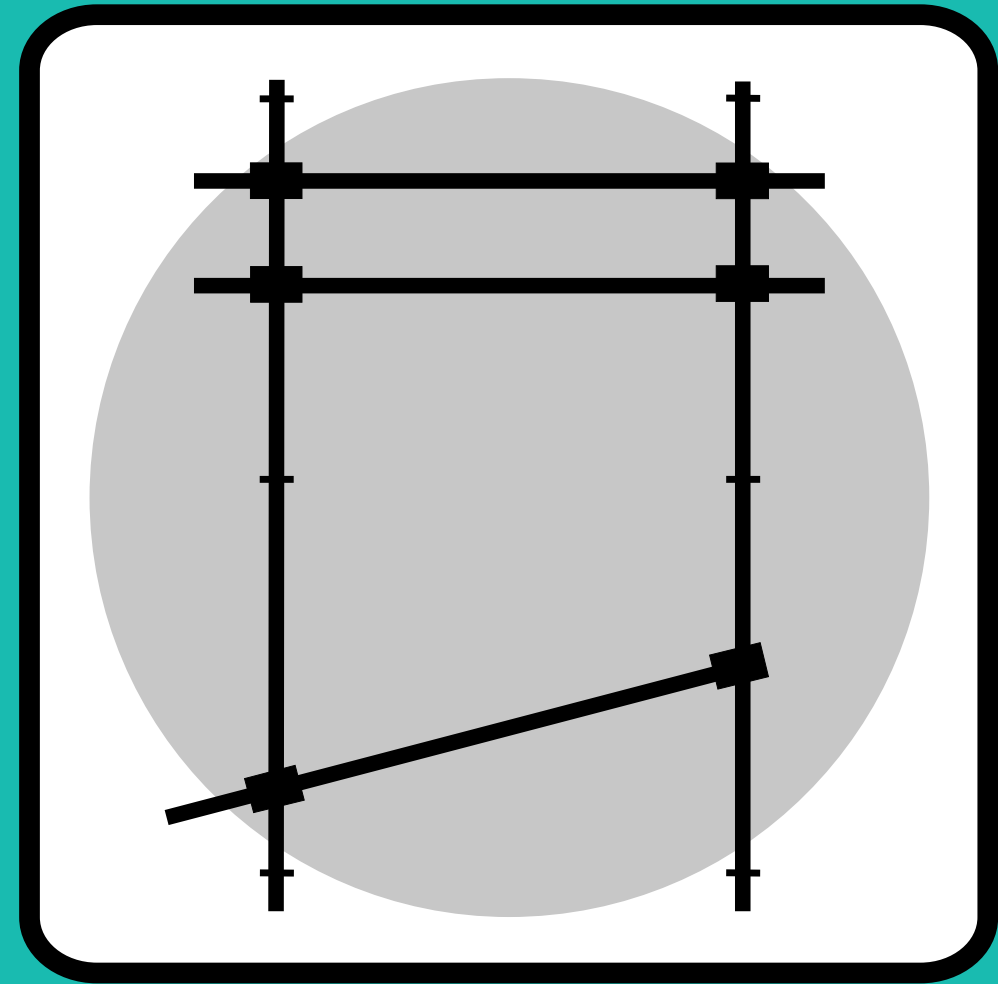
Stative
Studiosstands, Tripods
Piéd à colonne, Trépiéd



Deckenschienen-Systeme
Systèmes de rails
Roof track systems



Aufnahme-tische
Background tables
Tables de pris de vue



FOBA ceiling rail system. A system creates space.

FOBA®
STUDIO-TECHNOLOGY

FOBA AG
Studio-Technology
Friedgrabenstrasse 21
CH-8907 Wettswil
Telephone +41 1 700 34 77
Telefax +41 1 700 32 50
info@foba.ch
www.foba.ch

We reserve the right to make technical changes without notice. 08/03

FOBA®
STUDIO-TECHNOLOGY

**No more tangled cables to stumble over.
The FOBA ceiling rail system.**

Power cables, extension cables, power packs and light stands not only hinder good photography – they give your clients a chaotic impression.



The answer is the FOBA ceiling rail system.

Its clever, well-tried design keeps your lighting, power packs and cables mobile and always ready for use on the ceiling. This lets you work faster and in perfect lighting conditions on a completely uncluttered floor, thus making the most of available space. Even in large studios the FOBA ceiling rail system is ideal for efficient working, but particularly in small studios where every extra square inch of floor area means a genuine improvement to working conditions.

FOBA has developed two different systems for large and small studios respectively. Both ensure optimal safety and optimal working convenience:

FOBA ROOF TRACK

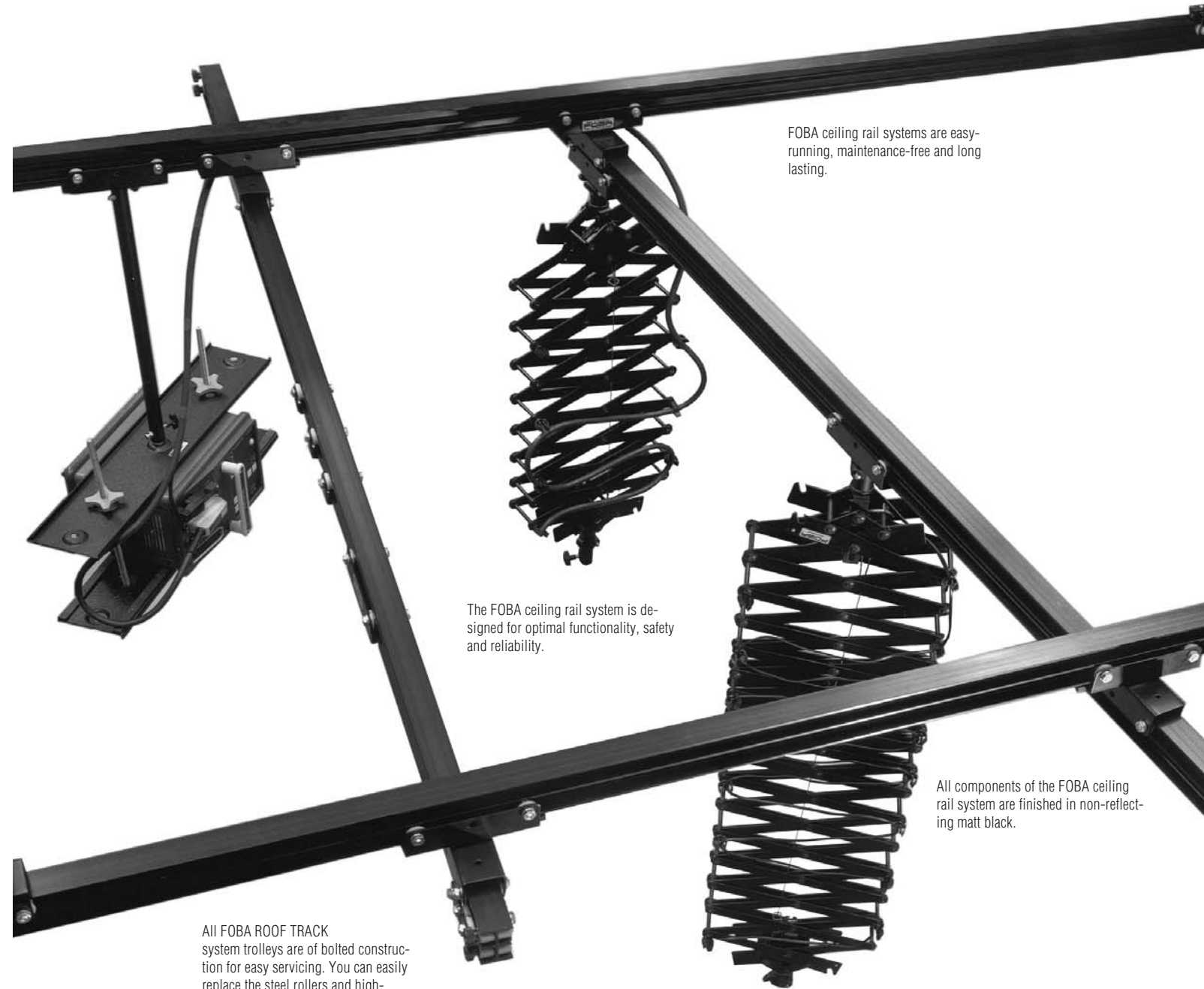
is a small-scale system which you can easily plan and install yourself. It is ideal for small and medium size photography studios, as well as portrait studios where clients have to feel at ease.



FOBA MEGA-TRACK

meets the highest demands for professional studios. These customized systems are designed and installed for you by FOBA or your local representative.

FOBA[®]
STUDIO-TECHNOLOGY



FOBA ceiling rail systems are easy-running, maintenance-free and long lasting.

The FOBA ceiling rail system is designed for optimal functionality, safety and reliability.

All components of the FOBA ceiling rail system are finished in non-reflecting matt black.

All FOBA ROOF TRACK system trolleys are of bolted construction for easy servicing. You can easily replace the steel rollers and high-precision ball bearings by yourself if necessary.

The pantographs of the FOBA ceiling rail system have a friction clamp which can be adjusted over a load range of 0 to 12 kg. For higher loads two different tension springs are available.

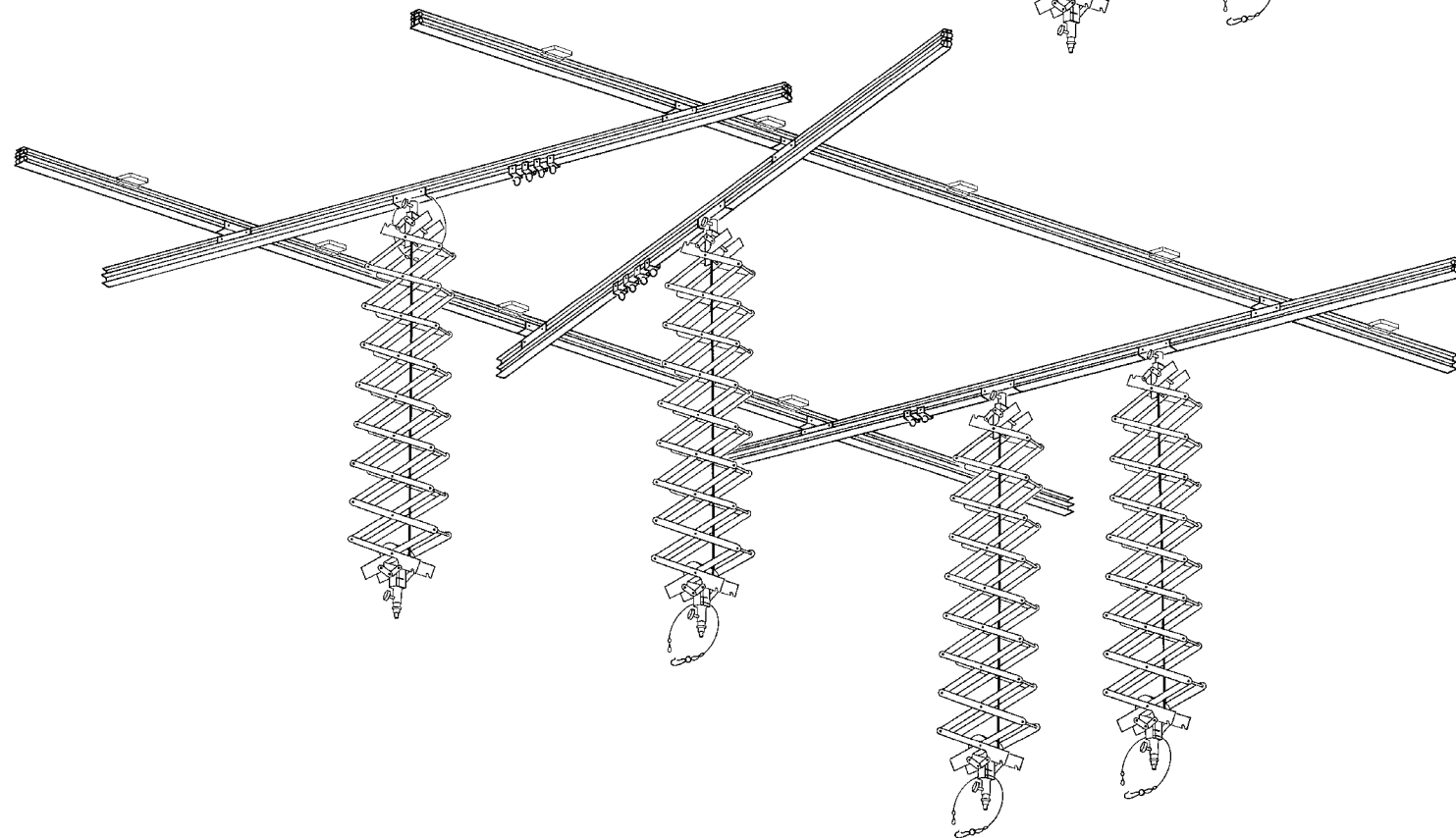
Roof-Track

Low initial investment thanks to modular system.

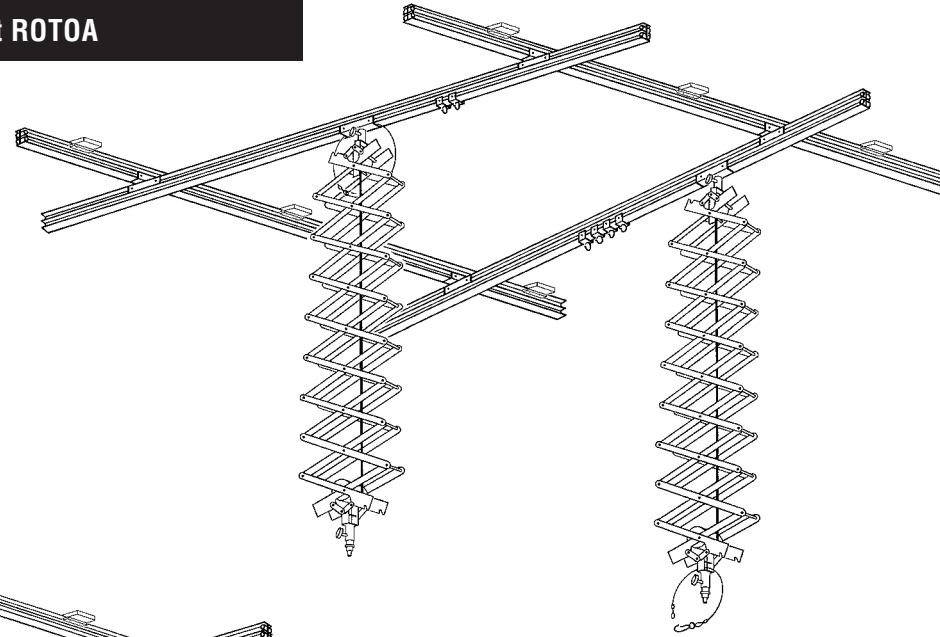
The FOBA ROOF TRACK system is ideal for small and medium sized studios. It is easy to install and needs no detailed planning in advance. The FOBA ceiling rail system grows with your business, and most economical way of starting is with one of the three sets for 12, 16 or 24 square metres of ceiling area. These sets come with all the accessories you need for a normal studio, but special system components can be added at any time for updating FOBA ROOF TRACK to new tasks or new equipment.

Each set comprises four or five ceiling rails, four or six cross trolleys and two to four pantographs for mounting any kind of lamp-base or reflector. The lamp-base safety lock can be opened with only two knobs. And thirdly there is a special safety cable to save your equipment from accidental falls.

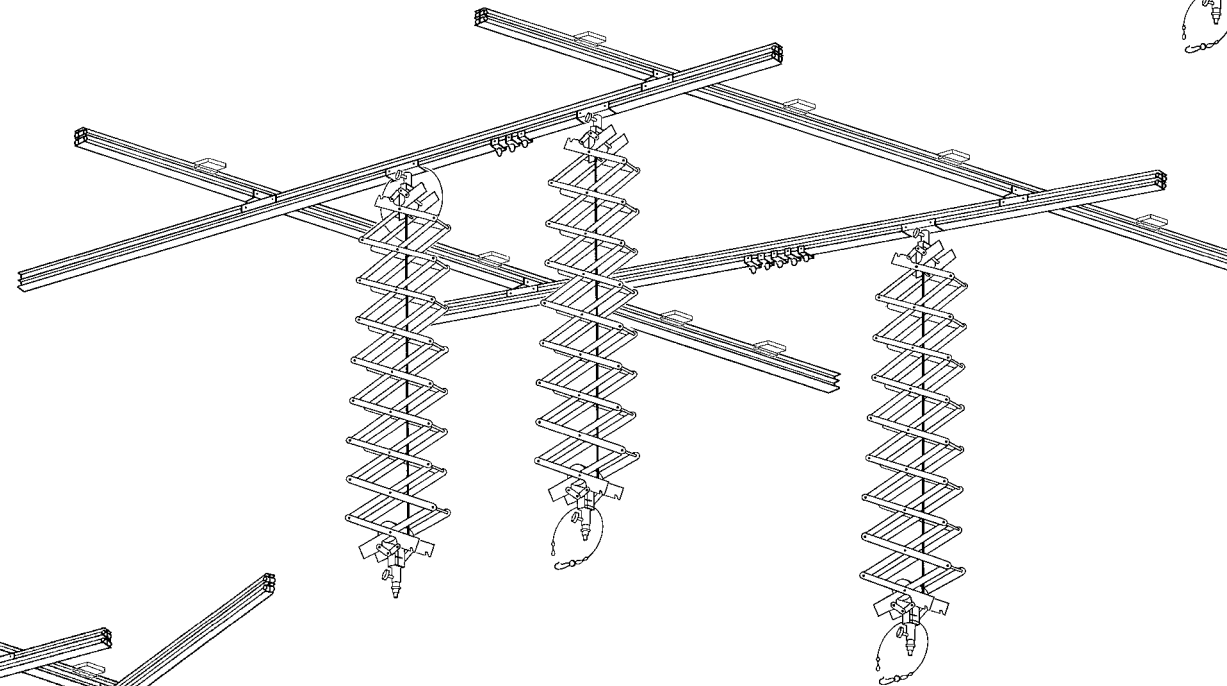
FOBA Maxi-Kit ROTOU



FOBA Mini-Kit ROTOA



FOBA Profi-Kit ROTOE

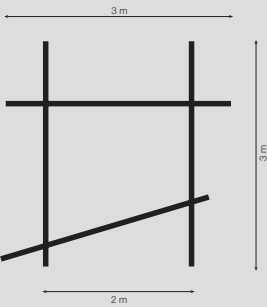


FOBA Mini-Kit ROTOA:

The FOBA mini-set for up to 12 m² of ceiling area. Ideal for small portrait or passport photograph studios.

- 4 ROTRA-3 3-metre ceiling rail
- 6 ROTIE Sets of 2 end stops
- 4 ROTAO Cross trolleys
- 2 ROTEU Trolleys for pantograph
- 3 ROTRO Sets of 2 ceiling mounts
- 2 ROTIA Sets of 4 cable holders
- 2 RODAU Universal adapters
- 2 ROBAE Pantographs with friction clamp
- 4 ROSIA Safety cables
- 1 Fork wrench 8 mm
- 1 Fork wrench 10 mm

Weight: 29 kg

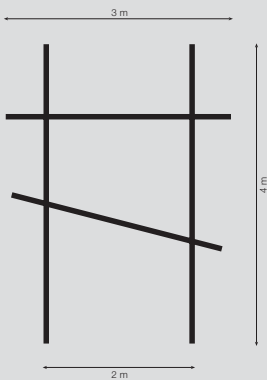


FOBA Profi-Kit ROTOE:

The basic set for medium size studios up to about 16 m² ceiling area. Extendible with an extra set or individual parts.

- 2 ROTRA-4 4-metre ceiling rail
- 2 ROTRA-3 3-metre ceiling rail
- 6 ROTIE Sets of 2 end stops
- 4 ROTAO Cross trolleys
- 3 ROTEU Trolleys for pantograph
- 4 ROTRO Sets of 2 ceiling mounts
- 3 ROTIA Sets of 4 cable holders
- 3 RODAU Universal adapters
- 3 ROBAE Pantographs with friction clamp
- 6 ROSIA Safety cables
- 1 Fork wrench 8 mm
- 1 Fork wrench 10 mm

Weight: 40 kg

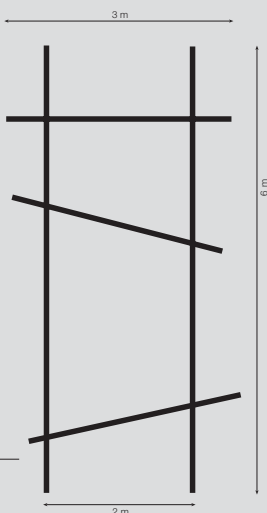


FOBA Maxi-Kit ROTOU:

The FOBA maxi-kit for 24 m² ceiling area or more.

- 2 ROTRA-6 6-metre ceiling rail
- 3 ROTRA-3 3-metre ceiling rail
- 8 ROTIE Sets of 2 end stops
- 6 ROTAO Cross trolleys
- 4 ROTEU Trolleys for pantograph
- 5 ROTRO Sets of 2 ceiling mounts
- 4 ROTIA Sets of 4 cable holders
- 4 RODAU Universal adapters
- 4 ROBAE Pantographs with friction clamp
- 8 ROSIA Safety cables
- 1 Fork wrench 8 mm
- 1 Fork wrench 10 mm

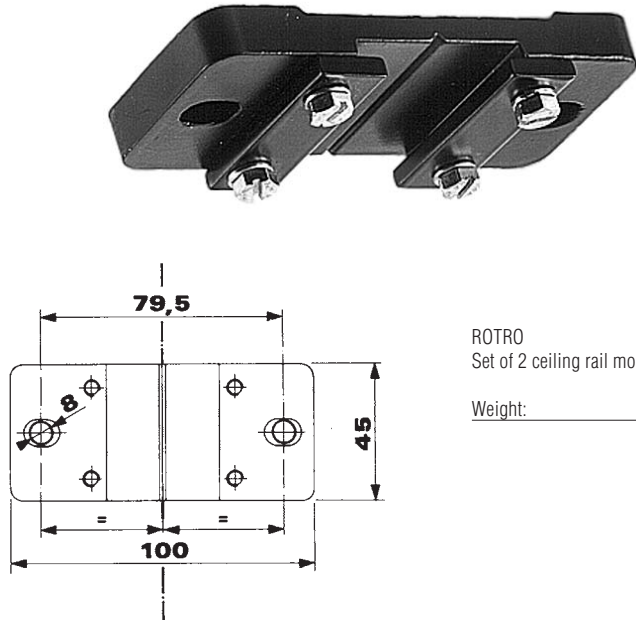
Weight: 57 kg



Focus on SAFETY.

All FOBA ceiling rail system materials are tested for strength. They comply with the most stringent safety regulations and quality norms. FOBA ROOF-TRACK is designed for a load of 25 kg per ROTRO ceiling mount. ROTRA ceiling rails are available in lengths of 2, 3, 4 and 6 metres, with special lengths on request.

Ceilings are not always horizontal. In order to compensate exactly for ceiling height variations, three different system components are available: RODIE1 and RODIE2 spacers are produced by FOBA in precise lengths from 10 cm to 1 m. The RODIO spacer is variable. Together with the RIDIO threaded rod, it lets you level off your own ceiling rails precisely.



ROTRO
Set of 2 ceiling rail mounts.

Weight: 210 g



ROTIO
Cable holder with hooks for cable clips or cable binders RUGOE, RUGOA, RUGOU.

Weight: 95 g



ROTIA
Set of 4 cable holders.

Weight: 340 g



ROTRA
Ceiling rail, aluminium, black.

	Rail length	Weight
ROTRA-2	2 m	2.8 kg
ROTRA-3	3 m	4.2 kg
ROTRA-4	4 m	5.6 kg
ROTRA-6	6 m	8.4 kg



RODIE1
Spacer between ceiling and ROTRO rail mount (not included).

Lengths: 10 to 50 cm

RODIE2
Spacer between ceiling and ROTRO rail mount (not included).

Lengths: 51 to 100 cm

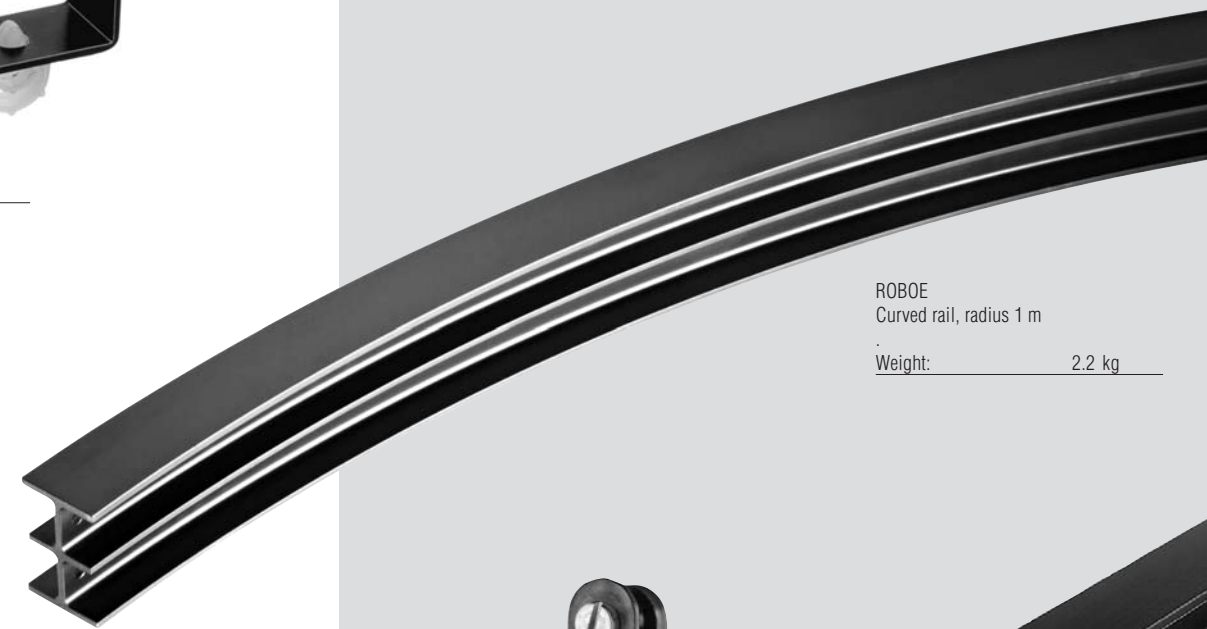


RODIO
Adjustable spacer between ceiling and ROTRO rail mount, with 2 nuts (ROTRO and threaded rod not included). Adjustment up to 3 cm.

Weight: 790 g

RIDIO
Threaded rod M16 for RODIO.

Length: 1 m
Weight: 1.3 kg



ROBOE
Curved rail, radius 1 m

Weight: 2.2 kg



RODOA
Set of 2 rail connectors. Can be used in two ways:
- right-angle rail connection
- connecting 2 rails above each other for reinforcing wide spans.

Weight: 600 g



Cable clips for holding power cables on ROTIO cable rolls.

RUGOE
diameter: 6 to 8 mm

RUGOA
diameter: 10 to 15 mm

RUGOU
diameter: 15 to 19 mm
Weight: 20 g



ROTIE
Set of 2 end stops incl. cable holders at rail ends.

Weight: 40 g

Bank lighting is in the air...

The FOBA ceiling rail system is ideal for large bank lights. Safely mounted on the ceiling, they can be positioned wherever required and stowed away afterwards.

Effortless movements.

The FOBA ceiling rail system not only makes everything easy, but safe as well. Fixing all your equipment, lights and cables to the ceiling keeps the floor clear for faster and more efficient working. Lighting can be adjusted more precisely and repeatedly, and nothing gets in the way. You can move around freely. The basis of the FOBA ceiling rail system is a hardwearing double aluminium rail, with free-running trolleys on sturdy high-precision ball-bearings. The pantographs are used for adjusting lamp height and have a friction clamp for "floating" lighting. For heavy loading the friction clamp can be relieved with one of two different tension springs.



ROMEI
Suspension kit, partially motorized. For light banks up to 35 kg. Without trolleys, but with four 24 V motors for up/down movements, 4-channel remote control with 10 m cable. Manual rotation 360°. ROMEI can be used on ROOF-TRACK (+ ROMAO) and MEGA-TRACK (+ ROMAEE). For different light bank sizes up to 2.5 x 1.5 m, this new suspension has various fixing positions for hanging points.

Weight: 33 kg



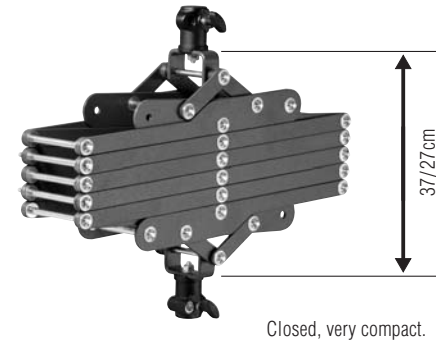
ROMAE
Set of trolleys for ROMEI on MEGA-TRACK system.

Weight: 7.4 kg



ROMAO
Set of trolleys for ROMEI on ROOF-TRACK system.

Weight: 1.6 kg



Closed, very compact.

ROBAE
With counterspring



ROTEU
Trolley to pantograph for ROOF-TRACK system.

Weight: 450 g



ROTUO
Trolley with Combitube connection.

Weight: 450 g



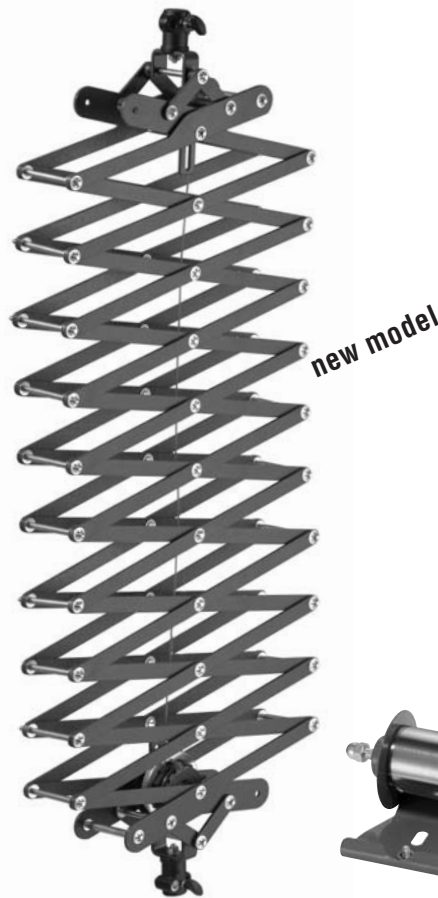
ROTAO
Cross trolley for connecting crossrails with longitudinal rails.

Weight: 800 g



ROBRE
Set of 2 friction clamps for gently braking trolleys.

Weight: 40 g



ROBAO
Pantograph 3,8 m with friction clamp. Load adjustable from 1 to 12 kg. Countersprings ROSAO/ROSAE can be used for easy operation with higher loads.

Length: 37 to 380 cm
Weight: 7.5 kg

Counterbalance tension springs
Increase pantograph load capacity for easy operation. Must be fitted according to instructions with pantograph closed and safety screw.

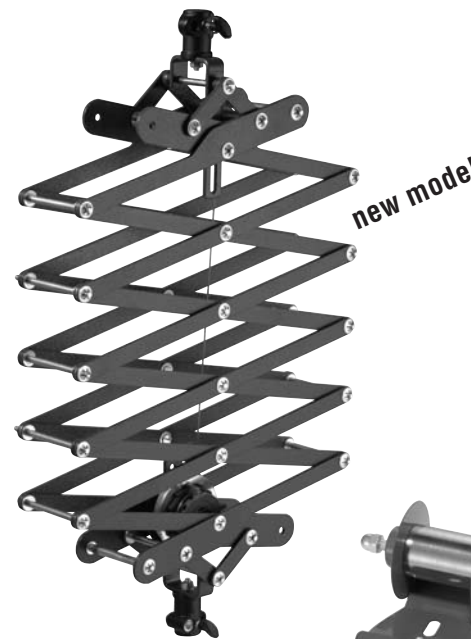


ROSAO (colour blue)
Counterspring typ 4 to ROBAO compensates 6 to 13 kg.

Weight: 935 g

ROSAE (colour blue)
Counterspring typ 12 to ROBAO compensates 13 to 18 kg.

Weight: 1.2 kg



ROBAE
Pantograph 2 m with friction clamp. Load adjustable from 1 to 12 kg. Countersprings ROSEO/ROSEA can be used for easy operation with higher loads.

Length: 27 to 200 cm
Weight: 4.9 kg



ROSEO (colour red)
Counterspring typ 4 to ROBAE compensates 6 to 13 kg.

Weight: 725 g

ROSEA (colour red)
Counterspring typ 12 to ROBAE compensates 13 to 18 kg.

Weight: 915 g

ROTUI
Universal powerpack trolley, adjustable up to 54 x 28 cm.

Weight: 3.3 kg



ROSIA
Safety cable.

Weight: 20 g



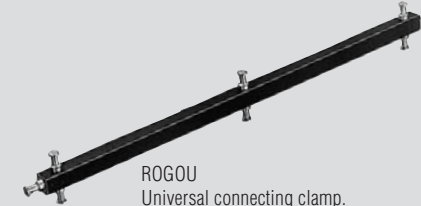
ROTAI
Counterbalance.

Weight: 410 g



RODUE
Universal adapter with 3/8" thread and wingnut.

Weight: 60 g



ROGOU
Universal connecting clamp.

Weight: 900 g



RODOI 1
50 cm extension.

Weight: 420 g



RODOI 2
1 m extension.

Weight: 840 g



RODUO
Adapter sleeve, dual 5/8".

Weight: 90 g

RODEA
Adapter for Broncolor Pulso lamps.

Weight: 95 g



RODUI
Adapter for Bron Impact.

Weight: 110 g



RODUA
COMBITUBE adapter.

Weight: 60 g



RODEE
Threaded sleeve adapter with taper for connecting lampheads to COMBITUBE.

Weight: 95 g

RODAU
Universal adapter with 3/8" and 1/4" threads.

Weight: 75 g

MEGA-TRACK for mega-demands.

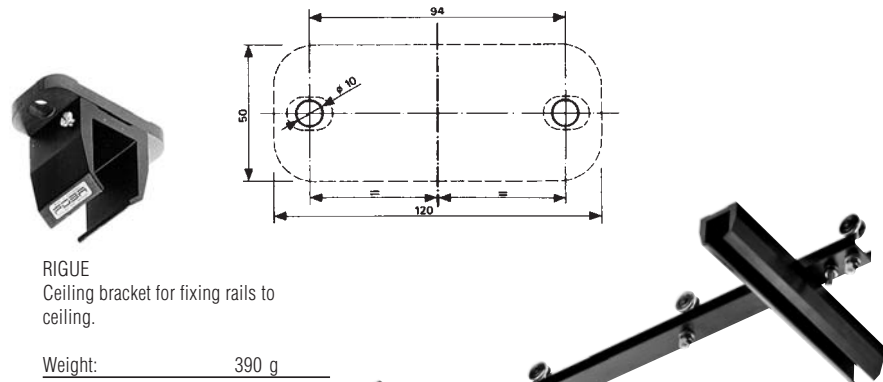
The FOBA MEGA-TRACK ceiling rail system is designed for tough professional studio use with the highest demands and extreme loading. MEGA-TRACK is particularly convenient for large bank lights.

All MEGA-TRACK installations are tailored by FOBA engineers to situation and requirements. This is the only way to ensure optimal room space utilization and perfect safety under loadings up to 250 kg.

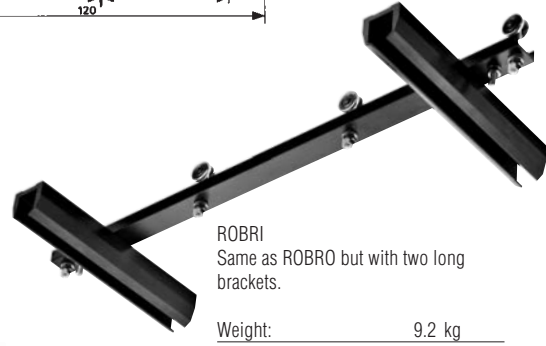
FOBA MEGA-TRACK ceiling rails are made of high-grade special steel profile, finished in black, with two integrated tracks.

FOBA MEGA-TRACK trolleys and rollers are designed for the heaviest loads. Thanks to high-precision ball-bearings, they glide smoothly and almost silently. This makes all the difference for efficient studio work without fatigue.

For even more convenient working, above all with large bank lights and heavy lamps in photography and film studios, remote-controlled motorized trolleys can be used with the FOBA MEGA-TRACK ceiling rail system. For equipment which is hardly ever moved or must not be disturbed, a trolley with brake is available. And for smaller jobs a special cross trolley allows the FOBA MEGA-TRACK to be combined with the ROOF-TRACK ceiling rail system designed for lighter loads.



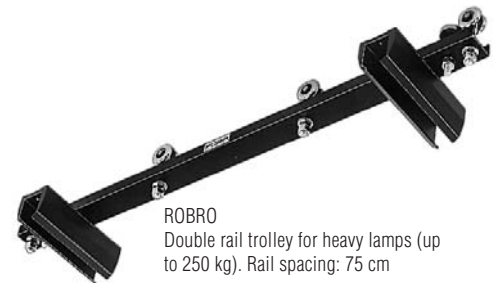
RIGUE
Ceiling bracket for fixing rails to ceiling.
Weight: 390 g



ROBRI
Same as ROBRO but with two long brackets.
Weight: 9.2 kg



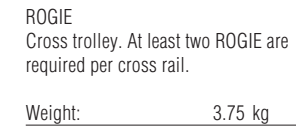
ROGIO
Cross trolley with long bracket for stable butt connection of two cross rails.
Weight: 4.8 kg



ROBRO
Double rail trolley for heavy lamps (up to 250 kg). Rail spacing: 75 cm.
Weight: 7.2 kg



RIGOE
Connector for long rails.
Weight: 1.2 kg



ROGIE
Cross trolley. At least two ROGIE are required per cross rail.
Weight: 3.75 kg



RIDIU
Adjustable spacer between ceiling and RIGUE or RIGOE bracket. With 2 nuts (not including bracket or threaded rod). Adjustable up to 3 cm.
Weight: 610 g



RIDIO
Threaded rod M16, 1 m long, for RIDIU.
Weight: 1.3 kg



REGIE
Trolley with Combitube connection and brake, for holding lamps, spots, etc.
Weight: 1.3 kg



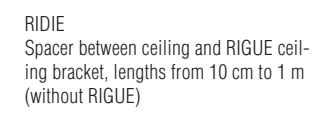
RAGIE
Double rollers. Extremely easy running on ball-bearings.
Weight: 360 g



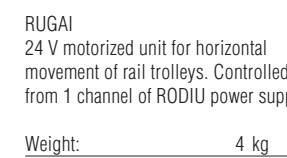
RETIU
Trolley with universal adapter for pan-tograph and accessories, with brake.
Weight: 1.3 kg



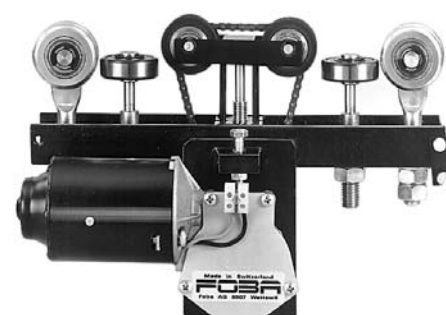
ROGAO
Cross trolley for connecting ROOF-TRACK cross rails to a large ceiling rail system.
Weight: 2.5 kg



RIDIE
Spacer between ceiling and RIGUE ceiling bracket, lengths from 10 cm to 1 m (without RIGUE)



RUGAI
24 V motorized unit for horizontal movement of rail trolleys. Controlled from 1 channel of RODIU power supply.
Weight: 4 kg



RUGIO
Power cable holder complete, without wire rope.
Weight: 323 g

RUGAE
Wire rope for MEGA-TRACK
Weight: 40 g/m



RIGIE
End stop.
Weight: 160 g



REGIA
Braking handle for RETIU and REGIE trolleys. Standard length: 1.3 m.
Weight: 780 g



RUGEO
Power cable roller for cable holders RUGOE, RUGOA, RUGOU.
Weight: 30 g



Cable holders for fixing power cables to RUGEO cable rollers.

RUGOE
diameter: 6 to 8 mm

RUGOA
diameter: 10 to 15 mm

RUGOU
diameter: 15 to 19 mm

Weight: 20 g each

